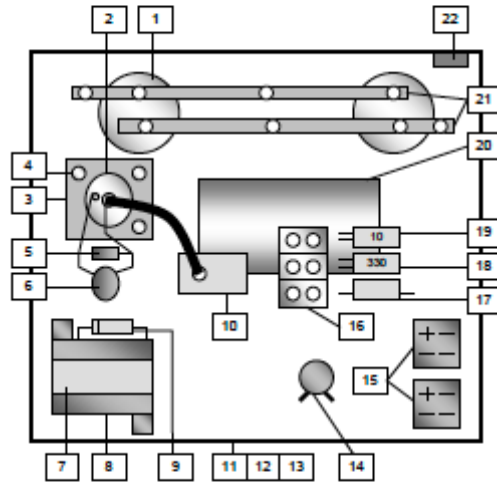


STUD WELDER DRAWING

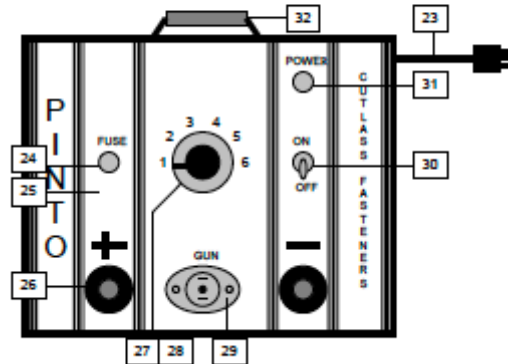
PINTO PARTS LIST

PINTO PARTS LIST




ITEM	DESCRIPTION	PART NO.
1	CAPACITOR (X2)	602-2299
2	WELD SCR	002-675
3	HEAT SINK	602-124
4	STAND OFF (X3)	602-125
5	RESISTOR 470R 1/2W	602-1055
6	CAPACITOR 0.1MFD	602-1056
7	RELAY 12VDC	602-1847
8	RELAY BASE	602-250
9	DIODE 1N4004	602-1054
10	CABLE MTG. BLOCK	602-1057
11	OUTER COVER	602-1043
12	CHASSIS	602-1042
13	FRONT PANEL	602-1025
14	DISCHARGE RESISTOR	002-984
15	BRIDGE RECTIFIER	019-582
16	TERMINAL BLOCK (X3)	002-480
17	RESISTOR 10K 1W	602-1030
18	CAPACITOR 330MFD	999-102
19	CAPACITOR 10MFD 63V	602-1029
20	MAIN TRANSFORMER	602-1026A
21	BUSS BAR STD	018-838
22	STRAIN RELIEF	018-700
23	POWER CORD & PLUG	999-090
24	CIRCUIT BREAKER 6A	602-1094
25	FRONT FACIA	602-1872A
26	WELD SOCKET (x2)	000-574
27	6-WAY SWITCH	602-1028
28	POT. KNOB	600-657P
29	CONTROL SOCKET	000-598P
30	ON/OFF SWITCH	602-050
31	NEON 110V	602-047
32	HANDLE	602-1163
33*	WIRE HARNESS	602-1050A

FRONT PANEL, FRONT VIEW



*NOT SHOWN

<p>CLIENT STUD WELDER</p>	<p>Unit # 16 ,158 – 12143 40th Street SE CALGARY, ALBERTA</p>	<p>IT IS THE RESPONSIBILITY OF THE SELLING DEALER TO VERIFY ANY & ALL DIMENSIONS SHOWN ON THIS DRAWING, ESPECIALLY THOSE SUPPLIED BY THE CUSTOMER. ANY ORDER PLACED FROM THIS</p>	<p>DATE: 09/09/2020</p>
	<p> Innovative Heat Treatment CANADA, T2Z 3V6 innovativeheattreatment.com</p>	<p>CUSTOMER. ANY ORDER PLACED FROM THIS DRAWING INDICATES THAT THE DIMENSIONS SHOWN HERE ARE CORRECT. PLEASE SIGN THIS DRAWING BELOW TO VERIFY ALL ITEMS ARE CORRECT. DATE IT</p>	<p>REVISIONS:</p>
<p>DRAWN BY: CH</p>	<p>AREA:</p>	<p>APPROVED BY:</p>	

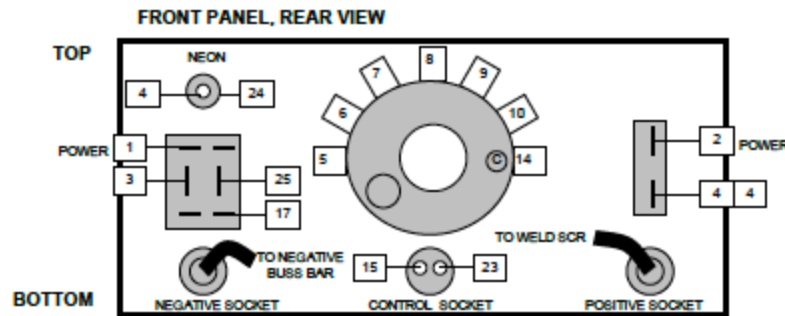
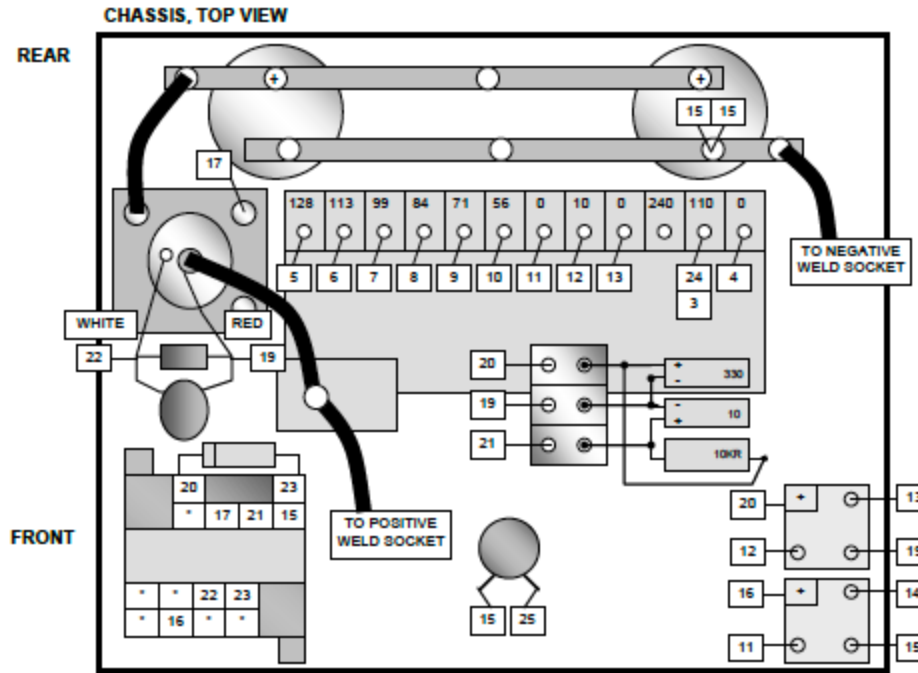
STUD WELDER DRAWING

PAGE

1 OF 2

PINTO PARTS LIST

PINTO WIRING DIAGRAM

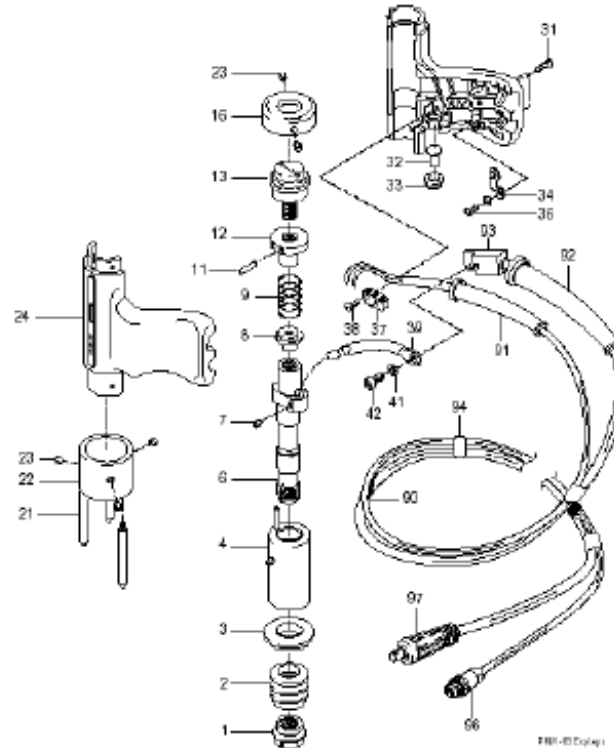


<p>CLIENT STUD WELDER</p>	<p>Unit # 16 ,158 – 12143 40th Street SE INNOVATIVE Heat Treatment CALGARY, ALBERTA CANADA, T2Z 3V6 innovativeheattreatment.com</p>	<p>IT IS THE RESPONSIBILITY OF THE SELLING DEALER TO VERIFY ANY & ALL DIMENSIONS SHOWN ON THIS DRAWING, ESPECIALLY THOSE SUPPLIED BY THE CUSTOMER. ANY ORDER PLACED FROM THIS CUSTOMER. ANY ORDER PLACED FROM THIS DRAWING INDICATES THAT THE DIMENSIONS SHOWN HERE ARE CORRECT. PLEASE SIGN THIS DRAWING BELOW TO VERIFY ALL ITEMS ARE CORRECT. DATE IT</p>	<p>DATE: 09/09/2020</p>
<p>DRAWN BY: CH</p>	<p>AREA:</p>	<p>APPROVED BY:</p>	<p>REVISIONS:</p>

DRAWING

PKM-1B / PINTO 'CHIP' PARTS LIST

PKM-1B GUN PARTS



ALTERNATE PARTS...

ITEM	PART NO.	DESCRIPTION	QTY
1A	80-40-1738	TAPER CHUCK ADAPTOR	1
22A	80-40-1739	SINGLE LEG FACEPLATE (fitted as standard)	1
22B	80-40-1113	TWIN LEG FACEPLATE	1

CLIENT
STUD WELDER

Unit # 16 ,158 – 12143 40th Street SE
INNOVATIVE
Heat Treatment
CALGARY, ALBERTA
CANADA, T2Z 3V6
innovativeheattreatment.com

IT IS THE RESPONSIBILITY OF THE SELLING DEALER TO VERIFY ANY & ALL DIMENSIONS SHOWN ON THIS DRAWING, ESPECIALLY THOSE SUPPLIED BY THE CUSTOMER. ANY ORDER PLACED FROM THIS CUSTOMER. ANY ORDER PLACED FROM THIS DRAWING INDICATES THAT THE DIMENSIONS SHOWN HERE ARE CORRECT. PLEASE SIGN THIS DRAWING BELOW TO VERIFY ALL ITEMS ARE CORRECT. DATE IT

DATE:
09/09/2020

REVISIONS:

DRAWN BY: **CH**

AREA:

APPROVED BY:

PKM-1B / PINTO 'CHIP' PARTS LIST

PKM-1B GUN PARTS

ITEM	PART NO.	DESCRIPTION	QTY
	PKM-1B-P25	COMPLETE PINTO PKM-1B	1
1	80-40-1741	B COLLET ADAPTOR	1
2	80-40-1097	BELLOWS	1
3	80-40-1023	INSULATING BUSH	1
4	80-40-1020	GUIDE BUSH	1
6	80-40-1740	SPINDLE	1
7	80-15-1011	M5 X 8 SOC. HD. SCREW	1
8	80-40-1027	SPRING PLATE	1
9	80-40-1031	MAIN SPRING	1
11	80-15-1022	M3 X 12 SOC. HD. SCREW	1
12	80-40-1015	ADJUSTING NUT	1
13	80-40-1603	SPRING ADJUSTING SCREW	1
16	80-40-1028	BACK CAP	1
21	80-40-1012	TRIPOD LEG	3
22	80-40-1013	TRIPOD FACEPLATE	1
23	80-15-1010	M5 X 4 SOC. HD. SCREW	1
24	80-40-1602	GUN BODY (TOP & BOTTOM)	1
31	80-10-1013	HANDLE SCREW	3
32	80-40-1016	TRIGGER BUTTON	1
33	80-40-1017	TRIGGER SLEEVE	1
34	80-10-1015	CABLE CLIP	1
36	80-15-1061	M2.5 X 8 SCREW	2
37	80-50-1013	TRIGGER SWITCH	1
38	80-15-1015	M2.0 X 10	2
39	80-72-1012	INTERNAL WELD CABLE	1
41	80-15-1016	M4 LOCK WASHER	1
42	80-15-1012	M4 X 8 SOC. HD. CAP SCREW 1	1
90	80-72-1039-P	WELD/CONTROL CABLE (25FT.)	1
91	80-10-1011	CONTROL CABLE SLEEVE	1
92	80-10-1013	WELD CABLE SLEEVE	1
93	80-35-1134	CABLE CONNECTING BLOCK	1
94	600-627	CABLE SLEEVE	1
96	000-594P	CONTROL PLUG C/M	1
97	000-573	WELD PLUG C/M	1

CLIENT
STUD WELDER

Unit # 16 ,158 – 12143 40th Street SE
 **Innovative** Heat Treatment
CALGARY, ALBERTA
CANADA, T2Z 3V6
innovativeheattreatment.com

IT IS THE RESPONSIBILITY OF THE SELLING DEALER TO VERIFY ANY & ALL DIMENSIONS SHOWN ON THIS DRAWING, ESPECIALLY THOSE SUPPLIED BY THE CUSTOMER. ANY ORDER PLACED FROM THIS CUSTOMER. ANY ORDER PLACED FROM THIS DRAWING INDICATES THAT THE DIMENSIONS SHOWN HERE ARE CORRECT. PLEASE SIGN THIS DRAWING BELOW TO VERIFY ALL ITEMS ARE CORRECT. DATE IT

DATE:
09/09/2020

REVISIONS:

DRAWN BY: CH

AREA:

APPROVED BY: